

REGION XIII EDUCATION & TRAINING PROGRAM WHITEPAPER

2020-2021 MOWW ACTIVITY SEASON – REGION XIII EDUCATION & TRAINING COMMITTEE (ETC)

This whitepaper provides an overview of how the Region XIII Education & Training Program (ETP) was created and how it is implemented currently. It delineates program development, its purpose and scope, its components, and provides sample modules.

Development:

- The Region XIII ETP initiative was first introduced during the 2018-2019 MOWW Activity Season to address several organization leadership development and competence program challenges.
 1. Devise an informational method to improve companion regional organization situational awareness.
 2. Create a regional training program to improve companion administrative and operational competence.
 3. Increase regional potential leader confidence and enrich advancement opportunities.
 4. Enhance companion level of administrative and operational proficiency.

Scope:

- The Region XIII ETP concept employs two primary instructional strategies: “Education-based” and “Training-based” approaches to impart information and guidelines.

Education-based Instruction – covers information and communication aimed at expanding individual general knowledge of the organization, such as organization history, development, its core values, corporate culture, and operational structure.

Training-based Instruction – covers information aimed at expanding individual general competence, and organizational day-to-day routine operations.

Components:

- The Region XIII ETP employs instructional modules (“topic-driven” slide presentation products) used during dedicated instructional opportunities (i.e. scheduled orientation presentations or training sessions).

Education-based Modules – can contribute to a scheduled organization conference or convention program segment presentation opportunity during scheduled staff meetings (i.e., use of robust “audio-visual” components, and posted “topic-specific” slide presentations and useful individual graphic slide information during online video conference call sessions).

Training-based Modules – are created with specific instructional competence training objectives in mind. While such modules can be extracted from a much broader “Education-based” orientation presentation resource, the purpose of a training module product is intended for activity scheduled (lesson plan-driven) initial or recurring instructional training certification or short programmed “teaching moment” event training segments.

SAMPLE Modules & Supplemental Aids:

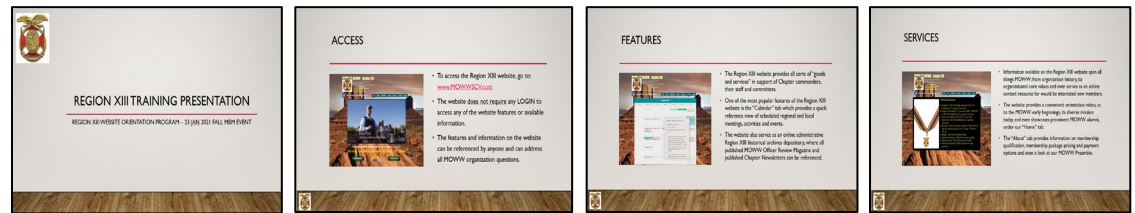
- **Education-based Modules (Slide Presentation)** – the following educational module sample depicts a “general orientation” broad informational slide presentation.



- **Training-based Modules (Slide Presentation)** – the following training module sample depicts a “stand-alone” specific training slide presentation objective designed to fulfill a target training block during a Region Conference.



- **Multi-based Modules (Education & Training-based Adaptable Usage Product)** – the following module sample depicts an instructional (training) slide presentation objective designed for a very specific training need during a Region Commander online ZOOM staff meeting with Department and Chapter Commanders.



- **ETP Module Supplemental Aids (Education & Training-based Activity Handout Products)** – the following ETP module aid samples depict added products to highlight “key” takeaway points.

